



DW SERIES

MULTI-PURPOSE POWER LINE FILTERS



INTRODUCTION

Two-stage filters providing excellent suppression at high frequency.

COMPONENTS

| PART NO. | C1 (uF) | C2 (uF) | L1 (mH) | L2 (uH) | Cy (pF) | R (Ω) |
|----------|---------|---------|---------|---------|---------|-------|
| 03DWCG5 | 0.22 | 0.22 | 1.0 | 30 | 3300 | 330K |
| 06DWCG5 | | | 1.7 | 70 | | |
| 10DWCG5 | | | 1.2 | 40 | | |
| 20DWGG5 | | 0.47 | 1.73 | 30 | | |

MINIMUM INSERTION LOSS IN dB

| COMMON MODE (L-G) IN 50 OHM SYSTEM | | | | | | |
|--|---------------|-----|-----|-----|----|----|
| CURRENT RATING | FREQUENCY-MHz | | | | | |
| | .15 | .50 | 1.0 | 5.0 | 10 | 30 |
| 3A | 12 | 20 | 30 | 60 | 60 | 45 |
| 6A | 25 | 30 | 45 | 55 | 55 | 45 |
| • 10A | 15 | 20 | 30 | 60 | 55 | 45 |
| • 20A | 20 | 25 | 30 | 55 | 55 | 45 |
| DIFFERENTIAL MODE (L-L) IN 50 OHM SYSTEM | | | | | | |
| 3A | 25 | 50 | 60 | 45 | 50 | 50 |
| 6A | 25 | 35 | 50 | 50 | 50 | 45 |
| • 10A | 25 | 50 | 50 | 45 | 45 | 45 |
| • 20A | 25 | 55 | 55 | 55 | 50 | 45 |

• VDE approved in 8A
• VDE approved in 16A

SPECIFICATIONS

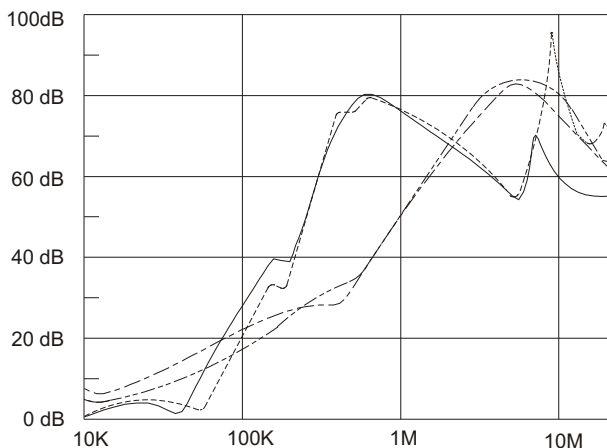
1. Maximum leakage current each line-to-ground: @ 115VAC 60Hz: 0.50mA
@ 250VAC 50Hz: 1.00mA
2. Hipot rating (one minute) line-to-ground: 2250VDC
line-to-line: 1450VDC
3. Operating frequency: 50/60Hz
4. Rated voltage: 115/250VAC

SERIES DIMENSIONS

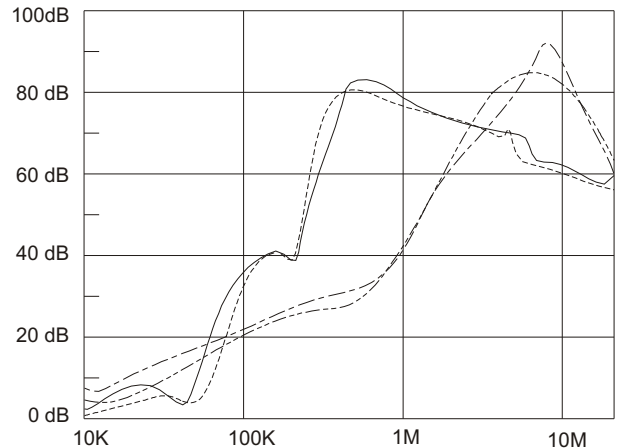
| PART NO. | DIMENSIONS IN INCHES/mm | | | | |
|----------|-------------------------|------|------|------|-------|
| | A | B | C | D | E |
| 03DWCG5 | 3.25 | 1.90 | 1.15 | 2.38 | 2.77 |
| | 82.5 | 48.3 | 29.2 | 60.5 | 70.4 |
| 06DWCG5 | 3.75 | 2.06 | 1.54 | 2.94 | 3.34 |
| 10DWCG5 | 95.2 | 52.3 | | 74.7 | 84.8 |
| 20DWGG5 | 5.25 | 3.40 | 39.1 | 3.75 | 4.14 |
| | 130.5 | 86.4 | 95.3 | 95.3 | 105.1 |

INSERTION LOSS (TYPICAL)

03DWCG5 - - - - - COMMON MODE - - - - - DIFF. MODE
06DWCG5 - - - - - COMMON MODE - - - - - DIFF. MODE



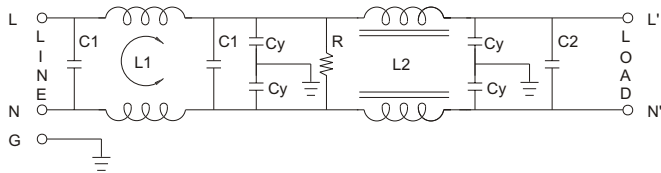
10DWCG5 - - - - - COMMON MODE - - - - - DIFF. MODE
20DWGG5 - - - - - COMMON MODE - - - - - DIFF. MODE



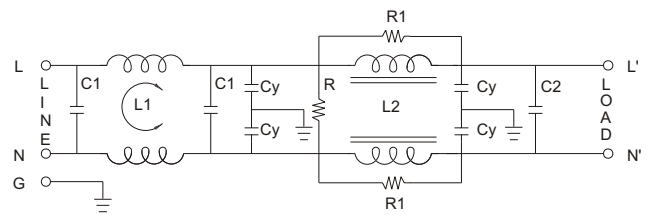
GENERAL PURPOSE TWO-STAGE FILTERS

ELECTRICAL SCHEMATIC

3A. 6A. 10A.



20A.



R1=330(Ohm)

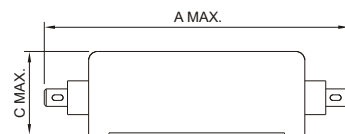
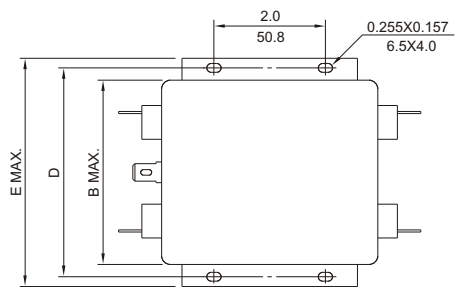
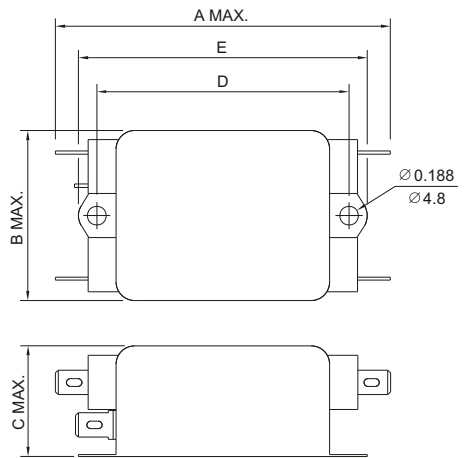
MECHANICAL CONSTRUCTION



CG5



GG5



UNIT: INCH
mm